



File Creat Date:17/12/02 16:22:50

# GSP-6 Data Report

## Device Information

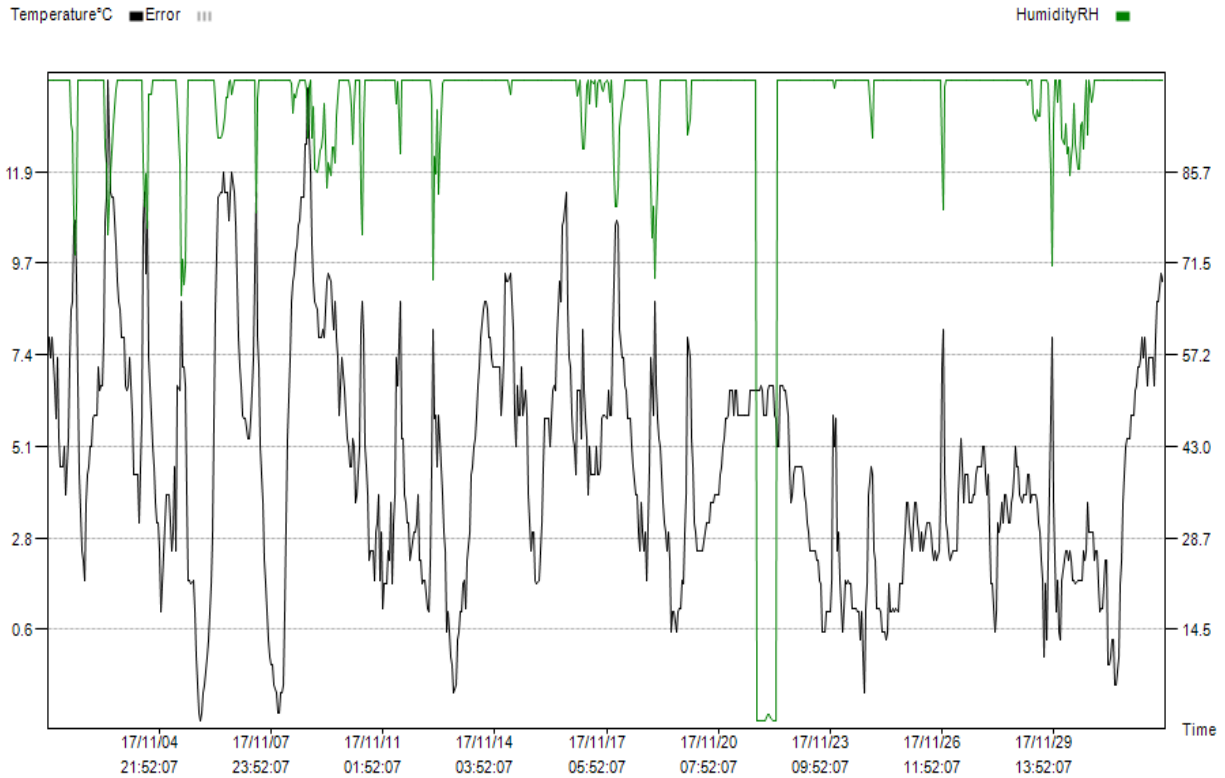
Log Interval: 1H 0M 0S	Start Delay: 0.0	Start Time: 17/11/01 19:52:07
Total Space: 16000	Stop Allow: Enable	Expected Stop Time: 19/08/30 10:52:07
Temperature Type:°C	Alarm Setting: Disable	Actual Stop Time: 17/12/02 15:52:07
Voice Set:Disable	Record Mode: Max	GSP: Disable

## Trip Information

Serial Number: 004  
 Userinfo: GSP-6 temperature & humidity Data Logger

## Logging Summary

Upper Limit: 60.0°C	Upper Limit: 90.0%RH	Recorded Count: 741
Lower Limit: -30.0°C	Lower Limit: 10.0%RH	First time: 17/11/01 19:52:07
Highest: 14.2°C	Highest: 100.0%RH	Last time: 17/12/02 15:52:07
Lowest: -1.7°C	Lowest: 0.2%RH	
Average: 4.6°C	Average: 96.2%RH	



Time	°C	RH	Time	°C	RH	Time	°C	RH	Time	°C	RH	Time	°C	RH	Time	°C	RH
17/11/01	7.3	100	23:52:07	-1.5	100	03:52:07	4.6	98.8	07:52:07	5.9	100	11:52:07	6.6	75.4	15:52:07	4.4	100
20:52:07	7.8	100	17/11/06	-1.7	100	04:52:07	4.6	95.9	08:52:07	6.5	100	12:52:07	5.9	80.4	16:52:07	3.9	100
21:52:07	7.3	100	01:52:07	-1.5	100	05:52:07	5.3	90.1	09:52:07	7.3	100	13:52:07	8.7	69.1	17:52:07	3.7	100
22:52:07	7.8	100	02:52:07	-1	100	06:52:07	5.1	96.4	10:52:07	9.4	100	14:52:07	6.6	78.4	18:52:07	3.2	100
23:52:07	6.6	100	03:52:07	-0.8	100	07:52:07	3.7	100	11:52:07	9.2	100	15:52:07	5.8	84.2	19:52:07	3	100
17/11/02	5.8	100	04:52:07	-0.1	100	08:52:07	3.9	100	12:52:07	9.2	100	16:52:07	5.3	92.6	20:52:07	2.5	100
01:52:07	7.3	100	05:52:07	0.3	100	09:52:07	5.1	100	13:52:07	9.4	97.8	17:52:07	5.1	100	21:52:07	2.5	100
02:52:07	5.3	100	06:52:07	1	100	10:52:07	8	82.3	14:52:07	8.7	100	18:52:07	3.7	100	22:52:07	2.5	100
03:52:07	4.6	100	07:52:07	1.7	100	11:52:07	8.7	75.9	15:52:07	8	100	19:52:07	3.2	100	23:52:07	2.5	100
04:52:07	4.6	100	08:52:07	3	100	12:52:07	7.8	93.4	16:52:07	5.9	100	20:52:07	3	100	17/11/23	2.3	100
05:52:07	4.6	100	09:52:07	5.8	100	13:52:07	5.1	100	17:52:07	5.1	100	21:52:07	2.5	100	01:52:07	2.3	100
06:52:07	5.1	100	10:52:07	8.5	96.8	14:52:07	4.6	100	18:52:07	6.6	100	22:52:07	3	100	02:52:07	1.8	100
07:52:07	3.9	100	11:52:07	9.9	93.4	15:52:07	3.9	100	19:52:07	5.9	100	23:52:07	2.3	100	03:52:07	1.7	100
08:52:07	5.3	100	12:52:07	11.3	91.1	16:52:07	2.3	100	20:52:07	5.9	100	17/11/19	0.5	100	04:52:07	0.5	100
09:52:07	7.3	100	13:52:07	11.4	91.1	17:52:07	2.5	100	21:52:07	7.1	100	01:52:07	1	100	05:52:07	0.5	100
10:52:07	8.5	93.1	14:52:07	11.4	91.6	18:52:07	2.5	100	22:52:07	5.9	100	02:52:07	1	100	06:52:07	0.5	100
11:52:07	8.7	92	15:52:07	11.9	92.6	19:52:07	1.8	100	23:52:07	6.5	100	03:52:07	0.5	100	07:52:07	1	100
12:52:07	10.6	78.8	16:52:07	11.4	94.5	20:52:07	3	100	17/11/15	5.9	100	04:52:07	1	100	08:52:07	1	100
13:52:07	10.7	72.9	17:52:07	11.4	97.3	21:52:07	3.2	100	01:52:07	3.9	100	05:52:07	1.1	100	09:52:07	1	100
14:52:07	9.2	80.9	18:52:07	11.4	97.3	22:52:07	3.9	100	02:52:07	3.2	100	06:52:07	1.1	100	10:52:07	1.8	100
15:52:07	6.6	100	19:52:07	10.7	99.8	23:52:07	1.8	100	03:52:07	2.5	100	07:52:07	1.8	100	11:52:07	5.9	100
16:52:07	4.4	100	20:52:07	11.4	100	17/11/11	3	100	04:52:07	3	100	08:52:07	1.7	100	12:52:07	5.1	98.8
17:52:07	2.5	100	21:52:07	11.9	97.8	01:52:07	1.1	100	05:52:07	3	100	09:52:07	3	100	13:52:07	5.8	100
18:52:07	2.3	100	22:52:07	11.4	100	02:52:07	1.7	100	06:52:07	1.8	100	10:52:07	3.9	100	14:52:07	2.5	100
19:52:07	1.8	100	23:52:07	10.6	100	03:52:07	1.7	100	07:52:07	1.7	100	11:52:07	7.8	91.6	15:52:07	3	100
20:52:07	3.7	100	17/11/07	9.2	100	04:52:07	2.5	100	08:52:07	1.8	100	12:52:07	7.3	94	16:52:07	1.8	100
21:52:07	4.4	100	01:52:07	7.8	100	05:52:07	2.3	100	09:52:07	2.5	100	13:52:07	5.3	100	17:52:07	0.5	100
22:52:07	4.6	100	02:52:07	7.1	100	06:52:07	3.7	100	10:52:07	3.2	100	14:52:07	4.6	100	18:52:07	1.1	100
23:52:07	5.1	100	03:52:07	6.6	100	07:52:07	1.7	100	11:52:07	4.6	100	15:52:07	3.2	100	19:52:07	1.8	100
17/11/03	5.1	100	04:52:07	5.9	100	08:52:07	3.2	100	12:52:07	5.8	100	16:52:07	3	100	20:52:07	1.7	100
01:52:07	5.8	100	05:52:07	5.8	100	09:52:07	3.9	100	13:52:07	5.8	100	17:52:07	2.5	100	21:52:07	1.8	100
02:52:07	5.9	100	06:52:07	5.8	100	10:52:07	7.3	96.4	14:52:07	5.8	100	18:52:07	2.5	100	22:52:07	1.7	100
03:52:07	5.9	100	07:52:07	5.3	100	11:52:07	6.6	98.8	15:52:07	5.8	100	19:52:07	2.5	100	23:52:07	1.7	100
04:52:07	7.1	100	08:52:07	5.3	100	12:52:07	8.7	88.5	16:52:07	5.1	100	20:52:07	2.5	100	17/11/24	1.1	100
05:52:07	6.5	100	09:52:07	5.8	100	13:52:07	5.3	100	17:52:07	6.5	100	21:52:07	2.5	100	01:52:07	1.1	100
06:52:07	6.6	100	10:52:07	6.5	100	14:52:07	5.3	100	18:52:07	6.6	100	22:52:07	3	100	02:52:07	1.1	100
07:52:07	6.6	100	11:52:07	7.3	100	15:52:07	3.9	100	19:52:07	6.5	100	23:52:07	3.2	100	03:52:07	1	100
08:52:07	7.8	100	12:52:07	9.4	100	16:52:07	3.7	100	20:52:07	7.8	100	17/11/20	3.2	100	04:52:07	1	100
09:52:07	10.7	89.6	13:52:07	11.4	79.3	17:52:07	3.2	100	21:52:07	8.5	100	01:52:07	3.2	100	05:52:07	0.3	100
10:52:07	11.3	87.1	14:52:07	7.8	97.3	18:52:07	3.2	100	22:52:07	9.2	100	02:52:07	3.7	100	06:52:07	1	100
11:52:07	14.2	76	15:52:07	7.1	100	19:52:07	2.3	100	23:52:07	8.7	100	03:52:07	3.7	100	07:52:07	-0.1	100
12:52:07	11.4	85.7	16:52:07	5.1	100	20:52:07	2.5	100	17/11/16	10.6	100	04:52:07	3.7	100	08:52:07	-1	100
13:52:07	11.3	89	17:52:07	3.7	100	21:52:07	3	100	01:52:07	10.7	100	05:52:07	3.9	100	09:52:07	1.1	100
14:52:07	11.3	92.9	18:52:07	2.3	100	22:52:07	3	100	02:52:07	11.4	100	06:52:07	3.9	100	10:52:07	1.7	100
15:52:07	10.7	95.9	19:52:07	1.7	100	23:52:07	3.2	100	03:52:07	8.5	100	07:52:07	3.9	100	11:52:07	3.9	100
16:52:07	10.1	98.4	20:52:07	1	100	17/11/12	3.9	100	04:52:07	7.3	100	08:52:07	4.4	100	12:52:07	4.6	94
17:52:07	9.2	100	21:52:07	0.3	100	01:52:07	2.3	100	05:52:07	7.1	100	09:52:07	4.6	100	13:52:07	4.4	91
18:52:07	8.7	100	22:52:07	-0.1	100	02:52:07	2.3	100	06:52:07	5.9	100	10:52:07	5.1	100	14:52:07	2.5	100
19:52:07	8.5	100	23:52:07	-0.3	100	03:52:07	1.7	100	07:52:07	5.3	100	11:52:07	5.3	100	15:52:07	2.3	100
20:52:07	7.8	100	17/11/08	-0.3	100	04:52:07	1.8	100	08:52:07	5.1	100	12:52:07	5.8	100	16:52:07	1.1	100
21:52:07	7.8	100	01:52:07	-0.8	100	05:52:07	1.8	100	09:52:07	4.4	100	13:52:07	5.8	100	17:52:07	1.1	100
22:52:07	6.6	100	02:52:07	-1	100	06:52:07	1.1	100	10:52:07	6.5	97.5	14:52:07	5.9	100	18:52:07	1.1	100
23:52:07	6.5	100	03:52:07	-1.5	100	07:52:07	1	100	11:52:07	6.5	100	15:52:07	6.5	100	19:52:07	1	100
17/11/04	6.6	100	04:52:07	-1.5	100	08:52:07	2.3	100	12:52:07	5.3	93.4	16:52:07	6.5	100	20:52:07	0.5	100
01:52:07	7.3	100	05:52:07	-1	100	09:52:07	4.6	97.3	13:52:07	8	89.2	17:52:07	5.9	100	21:52:07	0.5	100
02:52:07	6.6	100	06:52:07	-1	100	10:52:07	8	69	14:52:07	6.5	89.2	18:52:07	6.5	100	22:52:07	0.3	100
03:52:07	5.9	100	07:52:07	-0.8	100	11:52:07	5.8	88.1	15:52:07	5.8	93.4	19:52:07	6.5	100	23:52:07	0.5	100
04:52:07	4.4	100	08:52:07	1	100	12:52:07	5.9	85.3	16:52:07	5.3	99.3	20:52:07	5.9	100	17/11/25	1.7	100
05:52:07	4.4	100	09:52:07	3.2	100	13:52:07	4.6	95.4	17:52:07	3.9	100	21:52:07	5.9	100	01:52:07	1	100
06:52:07	4.4	100	10:52:07	5.3	100	14:52:07	5.9	82.2	18:52:07	5.1	96.4	22:52:07	5.9	100	02:52:07	1	100
07:52:07	3.2	100	11:52:07	7.3	100	15:52:07	5.3	89.5	19:52:07	4.4	100	23:52:07	5.9	100	03:52:07	1.1	100
08:52:07	4.6	100	12:52:07	8.7	99.4	16:52:07	3.9	99.4	20:52:07	4.4	99.4	17/11/21	5.9	100	04:52:07	1	100
09:52:07	5.8	100	13:52:07	9.2	95	17:52:07	3	100	21:52:07	4.4	100	01:52:07	5.9	100	05:52:07	1.1	100
10:52:07	10.7	87.2	14:52:07	9.4	97.9	18:52:07	2.5	100	22:52:07	5.1	95.9	02:52:07	5.9	100	06:52:07	1	100
11:52:07	11.4	80.2	15:52:07	9.9	97.3	19:52:07	0.5	100	23:52:07	4.4	99.4	03:52:07	5.9	100	07:52:07	1.7	100
12:52:07	9.4	85.3	16:52:07	10.1	98.4	20:52:07	1	100	17/11/17	4.4	100	04:52:07	6.5	100	08:52:07	1.7	100
13:52:07	10.7	76.8	17:52:07	10.6	99.3	21:52:07	0.5	100	01:52:07	4.6	100	05:52:07	6.5	100	09:52:07	1.7	100
14:52:07	7.3	97.9	18:52:07	10.7	100	22:52:07	-0.1	10									

Time	°C	RH	Time	°C	RH	Time	°C	RH	Time	°C	RH	Time	°C	RH
19:52:07	2.5	100	23:52:07	2.3	100									
20:52:07	2.5	100	17/12/01	2.3	100									
21:52:07	2.5	100	01:52:07	-0.3	100									
22:52:07	3.9	100	02:52:07	-0.3	100									
23:52:07	4.6	100	03:52:07	-0.1	100									
17/11/27	5.3	100	04:52:07	0.3	100									
01:52:07	4.6	100	05:52:07	0.3	100									
02:52:07	3.7	100	06:52:07	-0.8	100									
03:52:07	4.4	100	07:52:07	-0.8	100									
04:52:07	4.4	100	08:52:07	-0.1	100									
05:52:07	3.7	100	09:52:07	1.7	100									
06:52:07	3.7	100	10:52:07	2.3	100									
07:52:07	3.7	100	11:52:07	3.7	100									
08:52:07	3.9	100	12:52:07	4.4	100									
09:52:07	3.9	100	13:52:07	5.1	100									
10:52:07	4.4	100	14:52:07	5.3	100									
11:52:07	4.6	100	15:52:07	5.3	100									
12:52:07	4.6	100	16:52:07	5.3	100									
13:52:07	4.6	100	17:52:07	5.9	100									
14:52:07	5.1	100	18:52:07	5.9	100									
15:52:07	5.1	100	19:52:07	6.5	100									
16:52:07	4.4	100	20:52:07	6.6	100									
17:52:07	3.9	100	21:52:07	7.1	100									
18:52:07	4.4	100	22:52:07	7.1	100									
19:52:07	3	100	23:52:07	7.3	100									
20:52:07	1.7	100	17/12/02	7.8	100									
21:52:07	1.7	100	01:52:07	7.3	100									
22:52:07	0.5	100	02:52:07	7.8	100									
23:52:07	1	100	03:52:07	6.6	100									
17/11/28	3.2	100	04:52:07	7.3	100									
01:52:07	3	100	05:52:07	7.3	100									
02:52:07	3.2	100	06:52:07	7.3	100									
03:52:07	3.7	100	07:52:07	7.3	100									
04:52:07	3.2	100	08:52:07	6.6	100									
05:52:07	3.9	100	09:52:07	7.8	100									
06:52:07	3.9	100	10:52:07	8.7	100									
07:52:07	3.2	100	11:52:07	8.7	100									
08:52:07	3.2	100	12:52:07	9.4	100									
09:52:07	3.7	100	13:52:07	9.2	100									
10:52:07	3.9	100	14:52:07	9.4	100									
11:52:07	4.4	100	15:52:07	9.4	100									
12:52:07	5.1	100												
13:52:07	4.6	100												
14:52:07	4.6	100												
15:52:07	3.9	100												
16:52:07	3.7	100												
17:52:07	3.9	100												
18:52:07	3.9	100												
19:52:07	3.9	100												
20:52:07	4.4	99.3												
21:52:07	4.4	100												
22:52:07	3.7	100												
23:52:07	3.9	100												
17/11/29	3.9	95												
01:52:07	3.9	93.6												
02:52:07	3.7	95.4												
03:52:07	3.2	94.4												
04:52:07	3	94.4												
05:52:07	2.3	100												
06:52:07	1.8	100												
07:52:07	-0.1	100												
08:52:07	1.7	100												
09:52:07	0.3	100												
10:52:07	2.3	99.4												
11:52:07	5.9	85.3												
12:52:07	7.8	71												
13:52:07	3.7	93.4												
14:52:07	2.3	100												
15:52:07	1	100												
16:52:07	1.8	96.5												
17:52:07	0.5	100												
18:52:07	0.3	100												
19:52:07	1.8	91												
20:52:07	2.3	90												
21:52:07	2.5	93.1												
22:52:07	2.5	88.5												
23:52:07	2.3	89.5												
17/11/30	2.5	85.1												
01:52:07	2.3	88.2												
02:52:07	1.8	90.1												
03:52:07	1.8	96.4												
04:52:07	1.7	90.1												
05:52:07	1.8	86.1												
06:52:07	1.8	86.2												
07:52:07	1.8	92.9												
08:52:07	1.8	93.4												
09:52:07	2.5	89.2												
10:52:07	2.3	95.4												
11:52:07	2.5	100												
12:52:07	3.7	91.6												
13:52:07	3	100												
14:52:07	3	96.5												
15:52:07	3	97.9												
16:52:07	2.3	100												
17:52:07	2.5	100												
18:52:07	2.5	100												
19:52:07	1.7	100												
20:52:07	1	100												
21:52:07	1.1	100												
22:52:07	1.1	100												